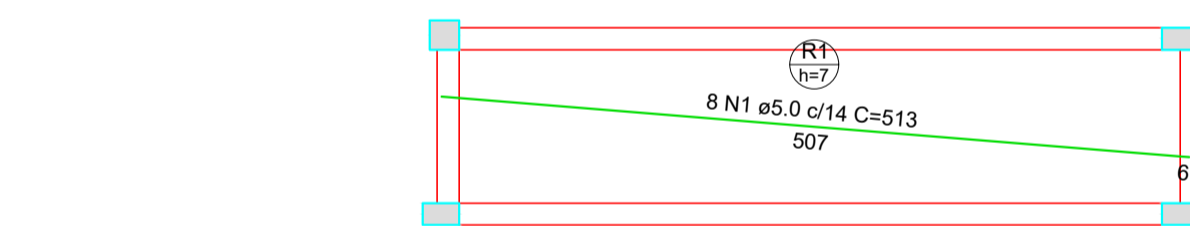
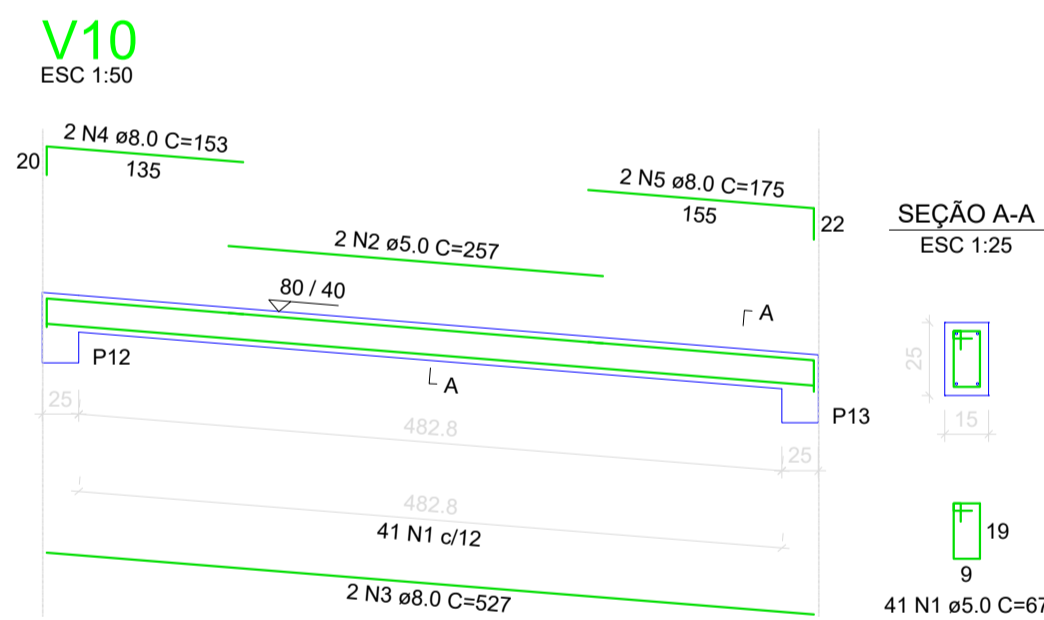
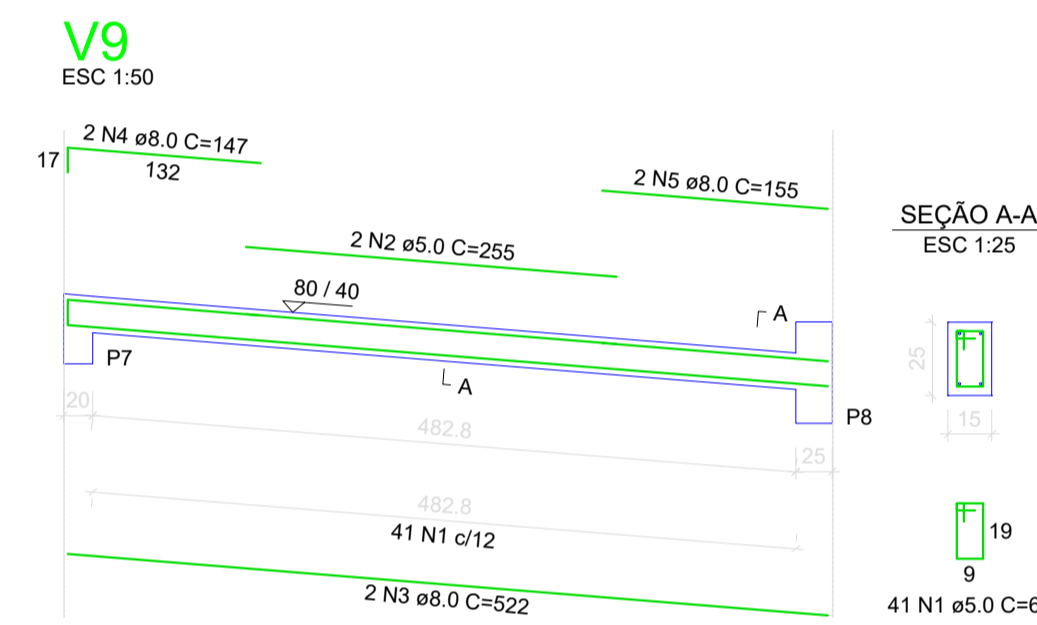
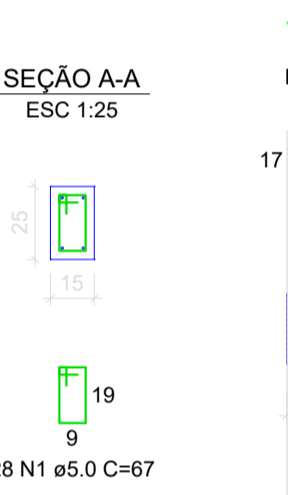
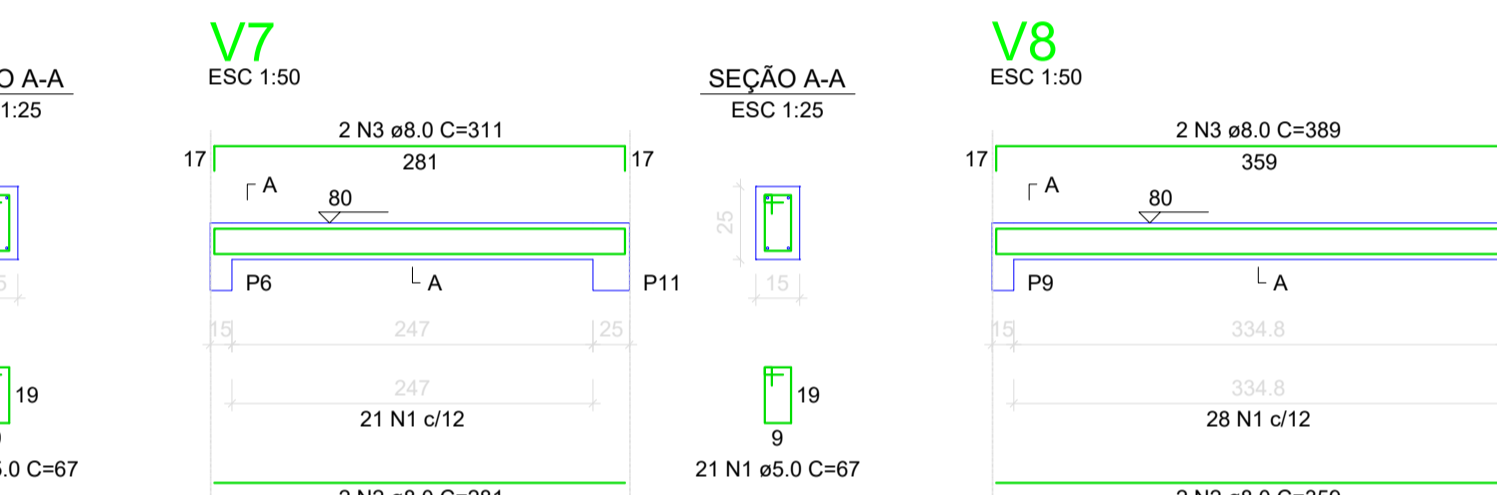
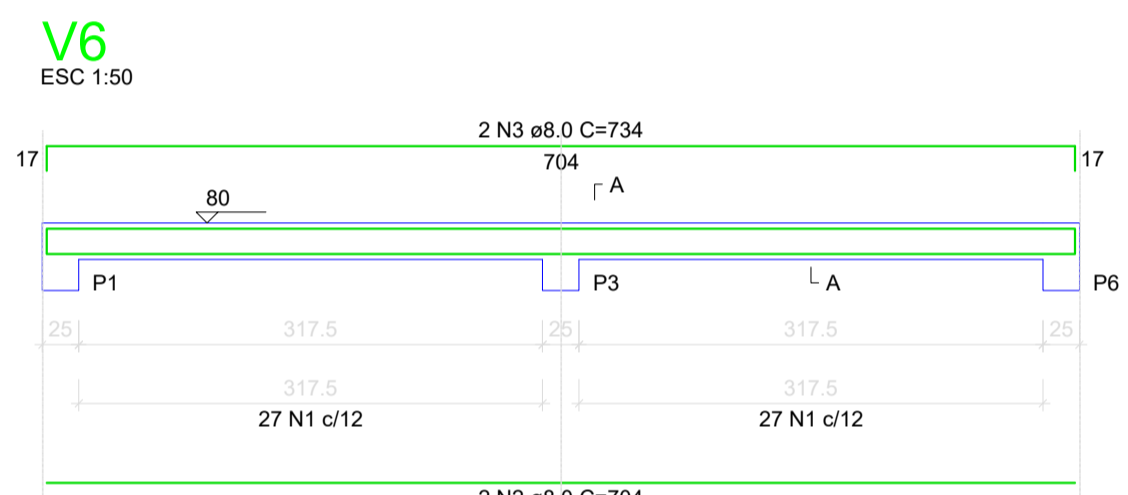
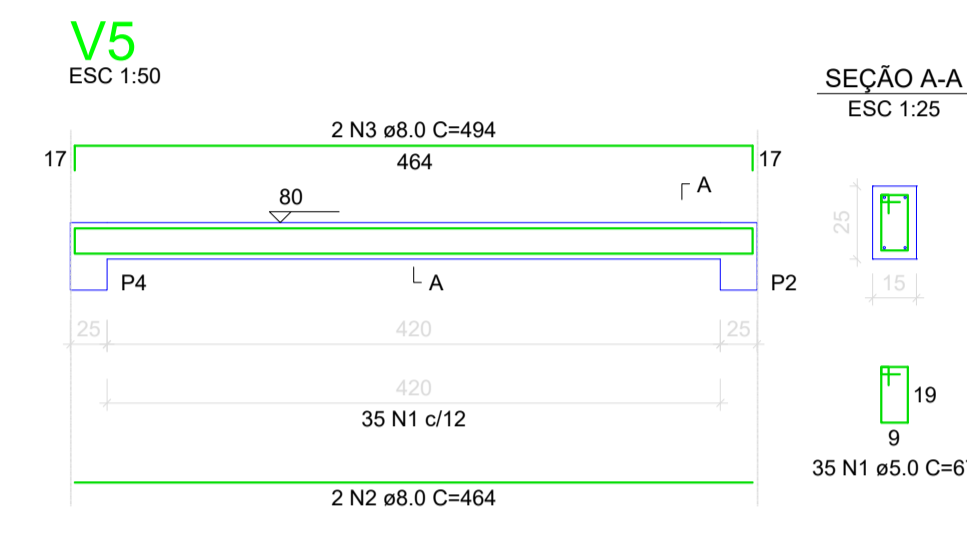
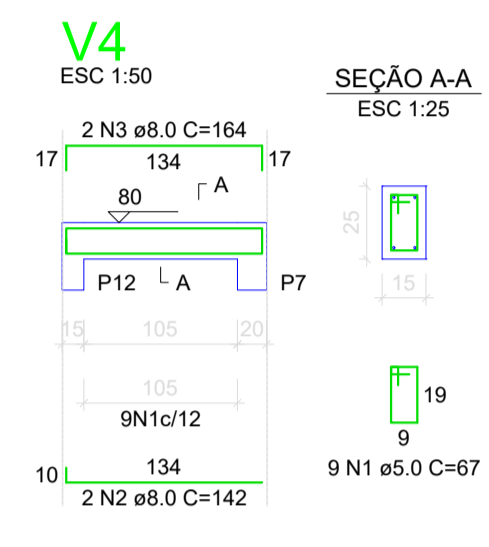
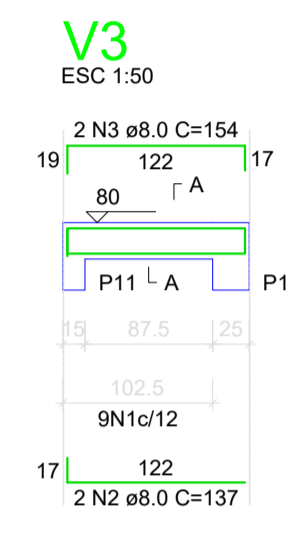
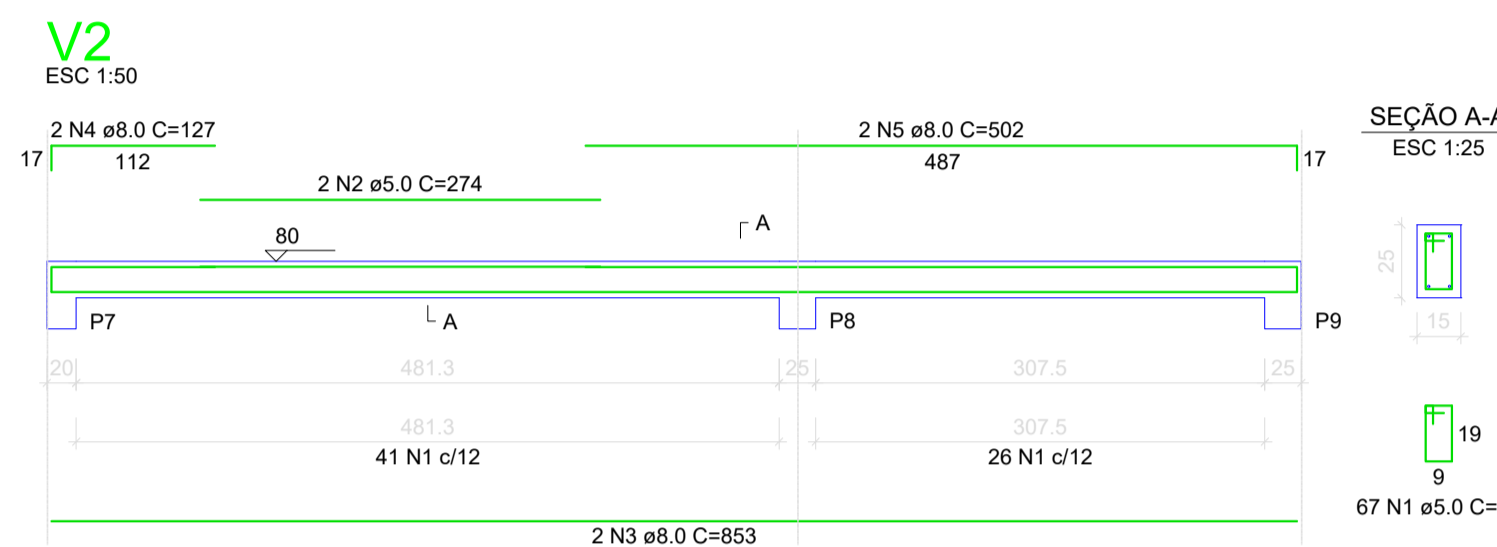
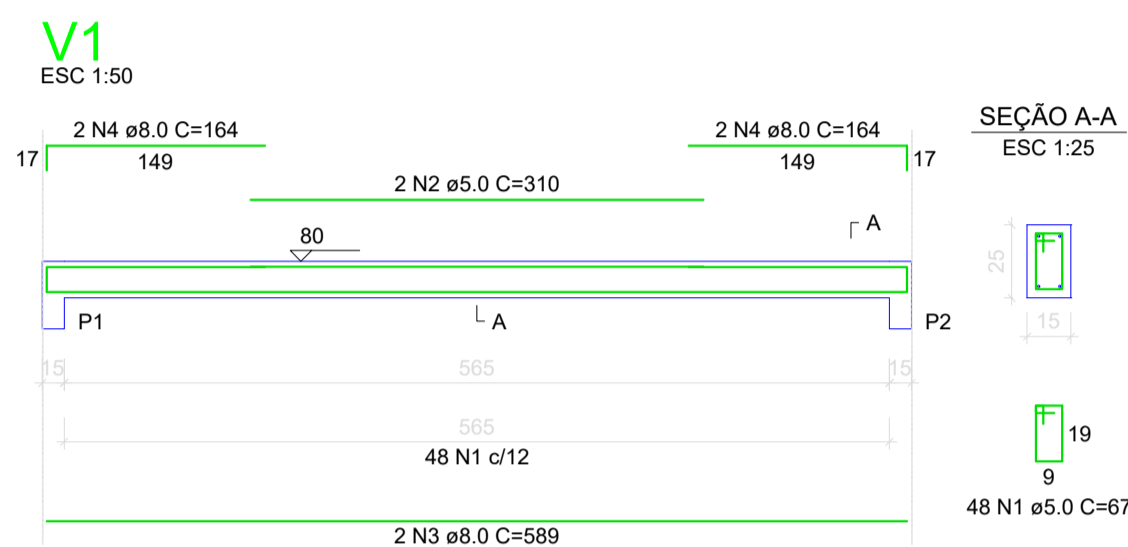
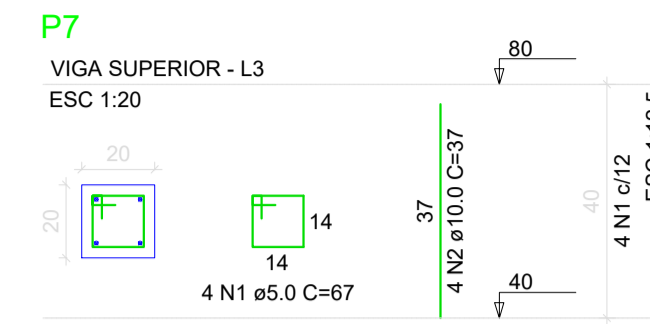
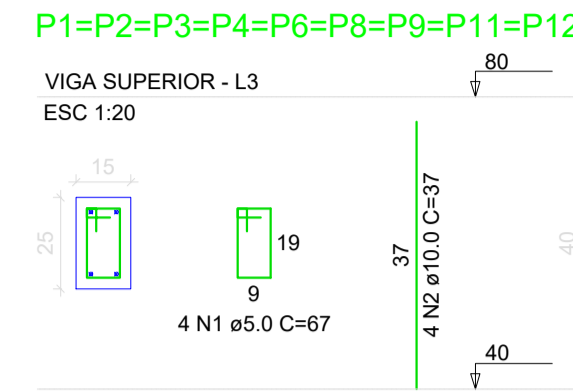
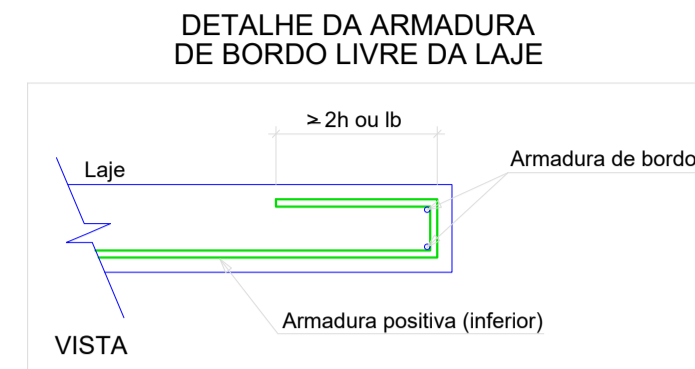
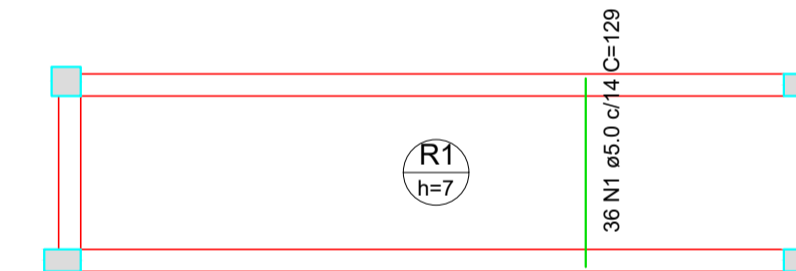


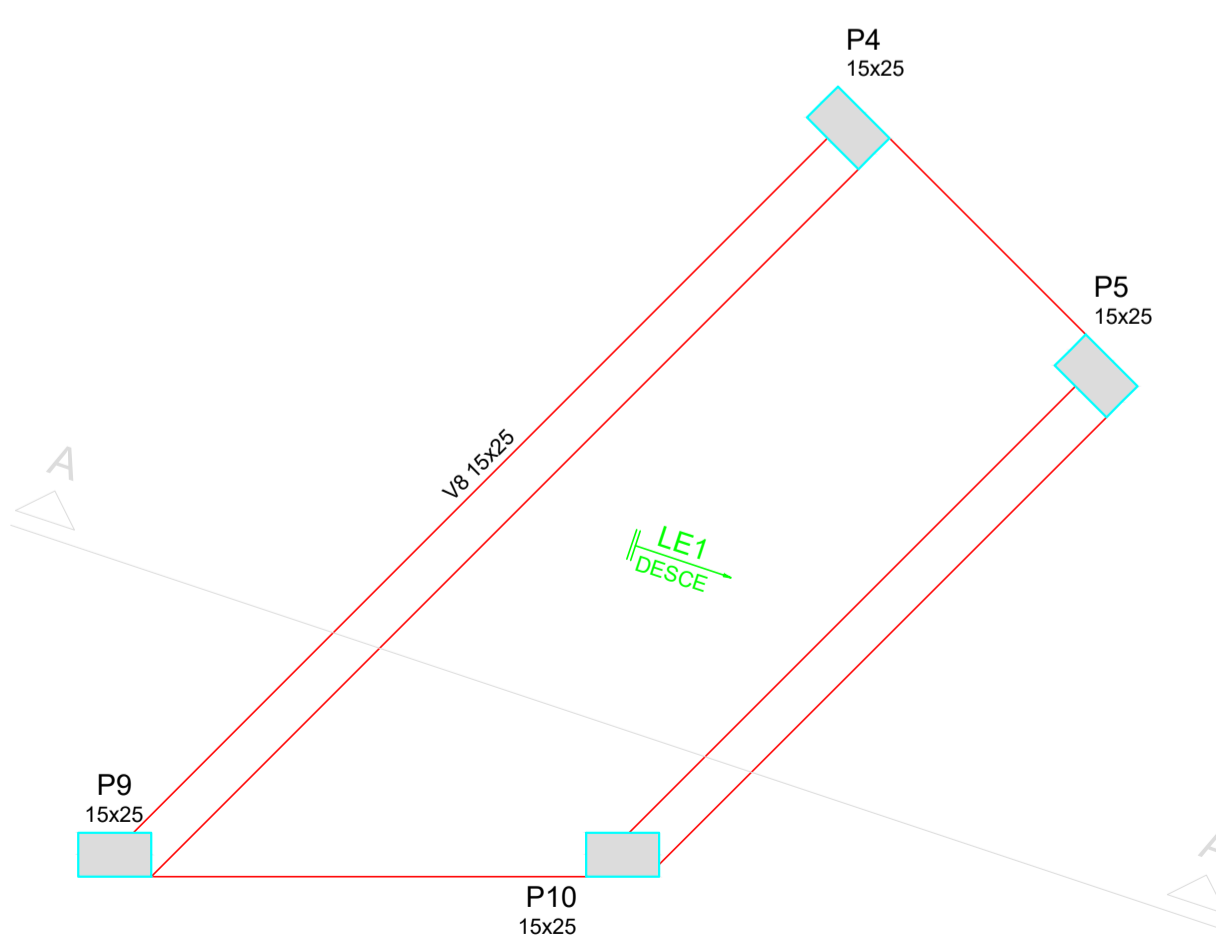
Armação positiva da Rampa (eixo Y)  
escala 1:50



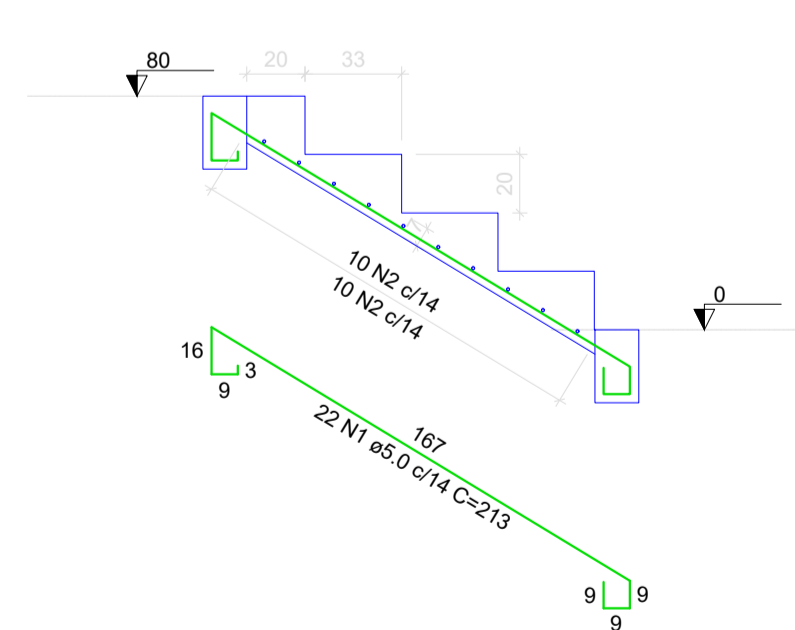
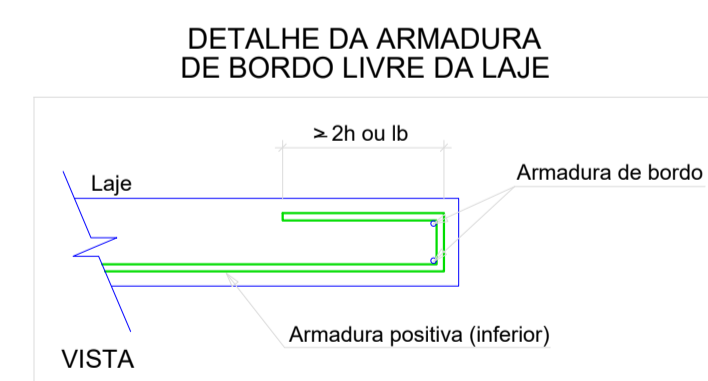
Armação positiva da Rampa (Eixo X)  
escala 1:50



Armação positiva da Rampa (Eixo Y)  
escala 1:50



Armação positiva da escada E1  
escala 1:25



Corte A-A (LE1)  
escala 1:25

RELAÇÃO DO AÇO

ELEMENTO	AÇO	N	DIAM (mm)	QUANT	C.UNIT (cm)	C.TOTAL (cm)
Positivos X-L3	CA60	1	5.0	8	513	4104
Positivos Y-L3	CA60	1	5.0	36	129	4644
Positivos Y-L2	CA60	1	5.0	36	129	4644
9xP1-L3	CA60	1	5.0	36	67	2412
	CA50	2	10.0	36	37	1332
P7-L3	CA60	1	5.0	4	67	268
	CA50	2	10.0	4	37	148
V1-L3	CA60	1	5.0	48	67	3216
	CA60	2	5.0	2	310	620
	CA50	3	8.0	2	589	1178
	CA50	4	8.0	4	164	656
V2-L3	CA60	1	5.0	67	67	4489
	CA50	2	5.0	2	274	548
	CA50	3	8.0	2	853	1706
	CA50	4	8.0	2	127	254
	CA50	5	8.0	2	502	1004
V3-L3	CA60	1	5.0	9	67	603
	CA50	2	8.0	2	137	274
	CA50	3	8.0	2	154	308
V4-L3	CA60	1	5.0	9	67	603
	CA50	2	8.0	2	142	284
	CA50	3	8.0	2	164	328
V5-L3	CA60	1	5.0	35	67	2345
	CA50	2	8.0	2	464	928
	CA50	3	8.0	2	494	988
V6-L3	CA60	1	5.0	54	67	3618
	CA50	2	8.0	2	704	1408
	CA50	3	8.0	2	734	1468
V7-L3	CA60	1	5.0	21	67	1407
	CA50	2	8.0	2	281	562
	CA50	3	8.0	2	311	622
V8-L3	CA60	1	5.0	28	67	1876
	CA50	2	8.0	2	359	718
	CA50	3	8.0	2	389	778
V9-L3	CA60	1	5.0	41	67	2747
	CA60	2	5.0	2	255	510
	CA50	3	8.0	2	522	1044
	CA50	4	8.0	2	147	294
	CA50	5	8.0	2	155	310
V10-L3	CA60	1	5.0	41	67	2747
	CA60	2	5.0	2	257	514
	CA50	3	8.0	2	527	1054
	CA50	4	8.0	2	153	306
	CA50	5	8.0	2	175	350

RESUMO DO AÇO

AÇO	DIAM (mm)	C.TOTAL (m)	PESO + 10% (kg)
CA50	8.0	168.2	73
CA60	10.0	14.8	10
CA60	5.0	419.2	71.1
<b>PESO TOTAL (kg)</b>			
CA50		83.1	
CA60		71.1	

Volume de concreto (C-25) = 2.24 m³  
Área de forma = 36.46 m²

RELAÇÃO DO AÇO DA ESCADA

ELEMENTO	AÇO	N	DIAM (mm)	QUANT	C.UNIT (cm)	C.TOTAL (cm)
LE1	CA60	1	5.0	22	213	4686
	CA60	2	5.0	20	VAR	VAR

RESUMO DO AÇO DA ESCADA

AÇO	DIAM (mm)	C.TOTAL (m)	PESO + 10% (kg)
CA60	5.0	106.5	18.1
<b>PESO TOTAL (kg)</b>			
CA60		18.1	

Volume de concreto (C-25) = 0.63 m³  
Área de forma = 7.05 m²

Obra	Revitalização da Praça dos Pioneiros	
Local	Avenida Brasil, Centro - Capanema/PR	
Proprietário	Prefeitura Municipal de Capanema	
Título	PROJETO ESTRUTURAL	
Referência	Área de intervenção 6525,00 m²	Prancha
- Detalhamento Vigas e Rampas	Data ABRIL / 2022	02/03
	Escala Indicada	
Resp.p/ projeto:	Representante Tomador:	
Erik Takashi Kurogi Engenheiro Civil CREA-PR: 114.993/2	Prefeitura Municipal de Capanema Américo Belli Prefeito Municipal	